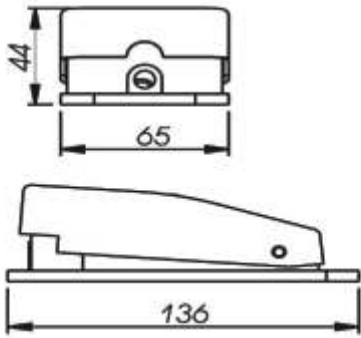
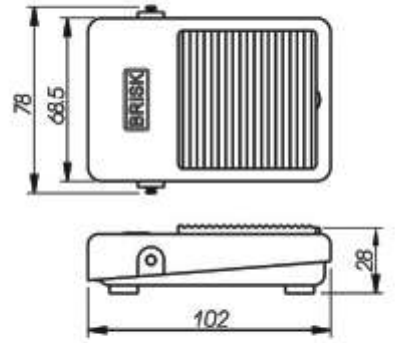




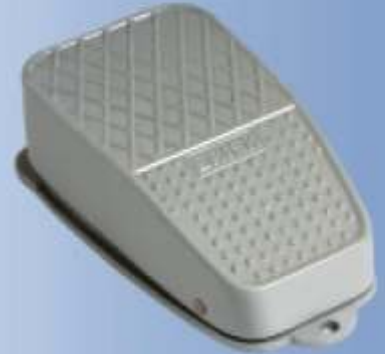
BFS-1

10A-250 Volt AC. ; (Push to ON Release to Off)
Contacts: 1NO + 1NC
Body : Aluminum Pressure Die-Casting
Weight: 160 Gms. Approx.



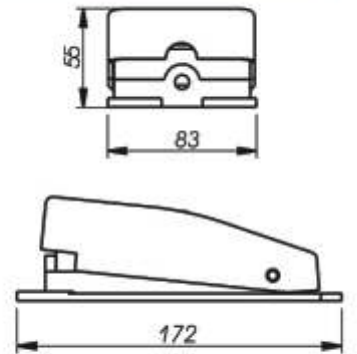
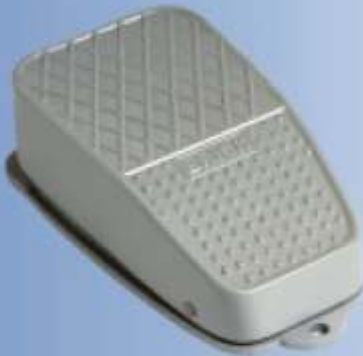
BFS-02

10A-250 Volt AC. ; (Push to ON Release to Off)
Contacts: 1NO + 1NC
 10A-250 Volt AC. ; (Push to ON Push to Off)
Contacts: 1NO
Body : Aluminum Pressure Die-Casting
Weight: 250 Gms. Approx.



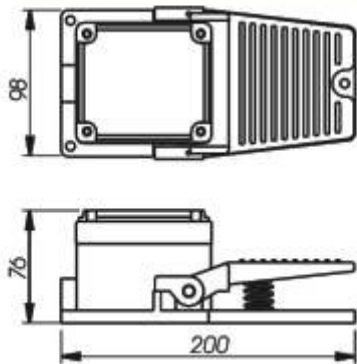
BFS-03

10A-250 Volt AC. ; (Push to ON Release to Off)
Contacts: 1NO + 1NC
 10A-250 Volt AC. ; (Push to ON Push to Off)
Contacts: 1NO
Body : Aluminum Pressure Die-Casting
Weight: 400 Gms. Approx.



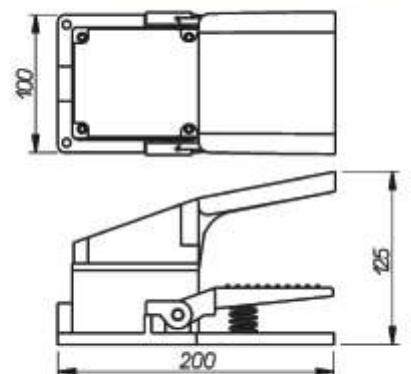
BFS-04

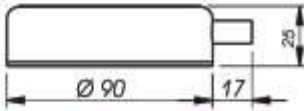
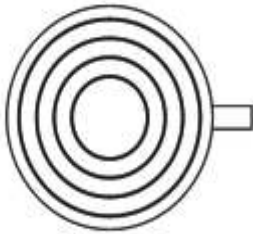
10A-250 Volt AC. ; (Push to ON Release to Off)
 10A-500 Volt AC. ; (Push to ON Release to Off)
Contacts: 1NO + 1NC
 10A-500 Volt AC. ; (Push to ON Release to Off)
Contacts: 2NO+2NC
 10A-250 Volt AC. ; (Push to ON Push to Off)
Contacts: 1NO
Body : Aluminum Pressure Die-Casting
Weight: 750 Gms. Approx.



BFS-05

10A-250 Volt AC. ; (Push to ON Release to Off)
 10A-500 Volt AC. ; (Push to ON Release to Off)
Contacts: 1NO + 1NC
 10A-500 Volt AC. ; (Push to ON Release to Off)
Contacts: 2NO+2 NC
 10A-250 Volt AC. ; (Push to ON Push to Off)
Contacts: 1NO
Body : Aluminum Pressure Die-Casting
Weight: 900 Gms. Approx.





BFS-06

Capsule

Contacts: 1NO + 1NC

6A-250 Volt AC. ; (Push to ON Release to Off)

Contacts: 1

Body : Rubber

Weight: 250 Gms. Approx.



BFS-07

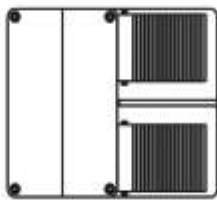
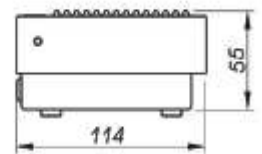
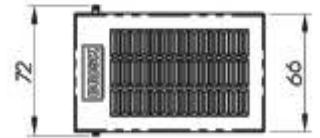
Trigger

10A-250 Volt AC.

Contacts: 1NO + 1NC

Body : Aluminum Pressure Die-Casting

Weight: 350 Gms. Approx.



BFS-08

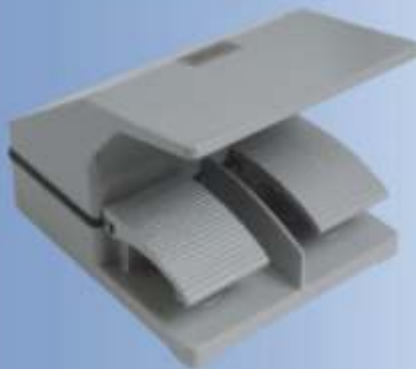
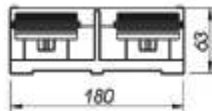
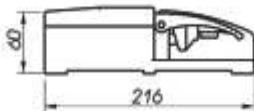
Twin Foot Switch

10A-250 Volt AC.

Contacts: 1NO + 1NC

Body : Aluminum Sand-Casting

Weight: 1640 Gms. Approx.



BFS-09

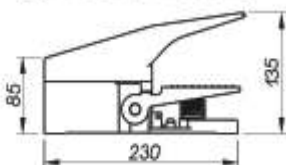
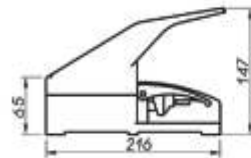
Twin Foot Switch

10A-250 Volt AC.

Contacts: 1NO + 1NC

Body : Aluminum Sand-Casting

Weight: 2300 Gms. Approx.



BFS-10

Heavy-Duty

10A-500 Volt AC. Contacts 1NO+1NC. (Single Switch)

10A-500 Volt AC. Contacts 2NO+2NC. (Single Switch)

10A-500 Volt AC. Contacts 1NO+1NC. (Double Switch)

10A-500 Volt AC. Contacts 2NO+2NC. (Double Switch)

Body : Aluminum Pressure Die-Casting

Weight: 1500 Gms. Approx.





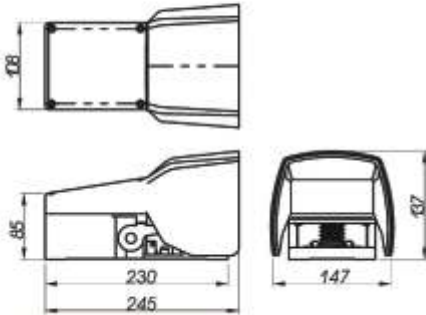
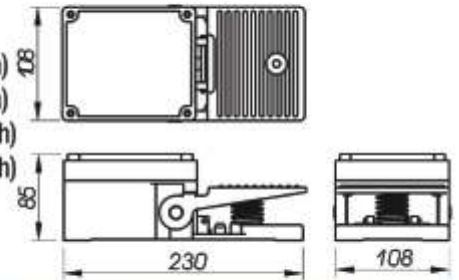
BFS-11

Heavy-Duty

- 10A-500 Volt AC. Contacts 1NO+1NC. (Single Switch)
- 10A-500 Volt AC. Contacts 2NO+2NC. (Single Switch)
- 10A-500 Volt AC. Contacts 1NO+1NC. (Double Switch)
- 10A-500 Volt AC. Contacts 2NO+2NC. (Double Switch)

Body : Aluminum Pressure Die-Casting

Weight: 1000 Gms. Approx.



BFS-12

Heavy-Duty

- 10A-500 Volt AC. Contacts 1NO+1NC. (Single Switch)
- 10A-500 Volt AC. Contacts 2NO+2NC. (Single Switch)
- 10A-500 Volt AC. Contacts 1NO+1NC. (Double Switch)
- 10A-500 Volt AC. Contacts 2NO+2NC. (Double Switch)

Body : Aluminum Pressure Die-Casting

Weight: 1850 Gms. Approx.



BFS-13

Popular

10A-250 Volt AC. ; (Push to ON Release to Off)

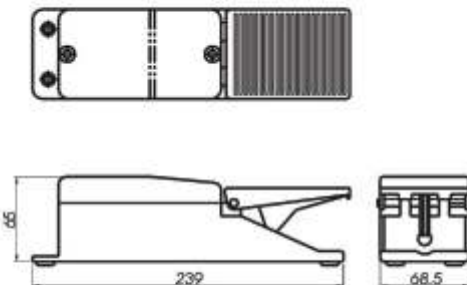
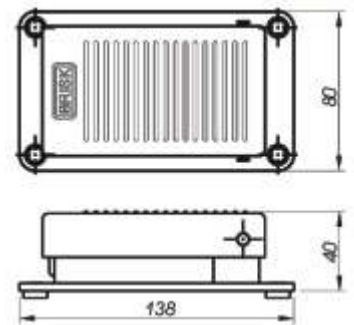
Contacts: 1NO + 1NC

10A-250 Volt AC. ; (Push to ON Push to Off)

Contacts: 1NO

Body : Aluminum Pressure Die-Casting

Weight: 300 Gms. Approx.



BFS-14

10A-250 Volt AC. ; (Push to ON Release to Off)

Contacts: 1NO + 1NC

10A-250 Volt AC. ; (Push to ON Push to Off)

Contacts: 1NO

AC Variable Speed Control Foot Switch.

6A-125 V AC / 4A-250 V AC

Body : Aluminum Pressure Die-Casting

Weight: 800 Gms. Approx.



BFS-15

10A-250 Volt AC. ; (Push to ON Release to Off)

Contacts: 1NO + 1NC

10A-250 Volt AC. ; (Push to ON Push to Off)

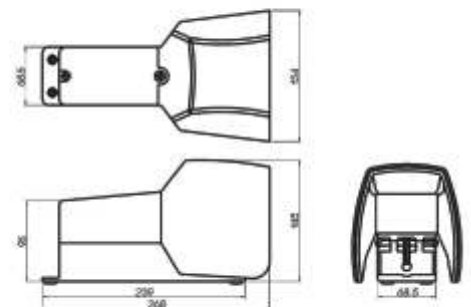
Contacts: 1NO

AC Variable Speed Control Foot Switch.

6A-125 V AC / 4A-250 V AC

Body : Aluminum Pressure Die-Casting

Weight: 1514 Gms. Approx.



Manufactured By:

BRISK

BRISK ENGINEERING COMPANY