

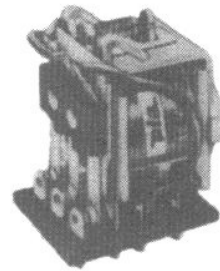


M SERIES RELAYS

TECHNICAL SPECIFICATION :

Contact Rating At 24 VDC/250VAC	Typical Life Expectancy
6Amps Resistive	10 ⁶ operations
10 Amps Resistive	10 ⁵ operations
* Also Available 5 Amps Version	

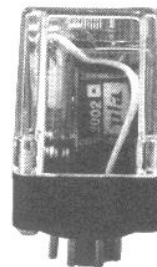
Contact Material	Alloy Silver
Initial Contact Resistance	0.050 Ohms (max.)
Ambient Temperature	-25°C to +55°C
Di-electric Strength	2 KV between contacts or coil to ground
Insulation Resistant	100 Meg-Ohms min at 500 VDC AT 25°C & 65% RH
Operate Time	0.020 sec.max. at nominal Voltage
Release Time	0.010 sec.max. at nominal Voltage
Max. Weight	MCO 60 gms. MCC 80 GMS. MPC 90 gms.



TYPE MCO
OPEN VERSION
SOLDER CONNECTION



TYPE MCC
ENCLOSED VERSION
SOLDER CONNECTION



TYPE MPC
ENCLOSED VERSION
PLUG-IN-CONNECTION

COIL-DATA (All Values at 27°C±2°C Ambient, cold start)			
Nominal Voltage	Resistance in Ohms±10%		Must Operate Voltage
	DC Relays	AC Relay	
6	30	7	5
12	200	30	10
18	390	-	15
24	500	110	20
48	2250	440	40
110	10000	2400	90
240	110 DC Relays with 10 k/2 resistor	9500	180

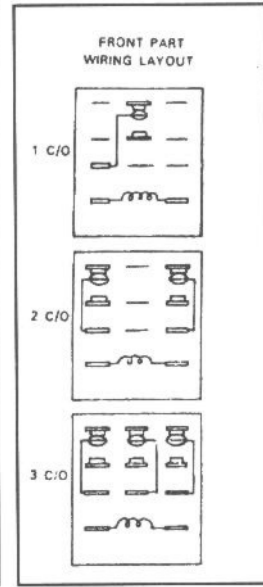
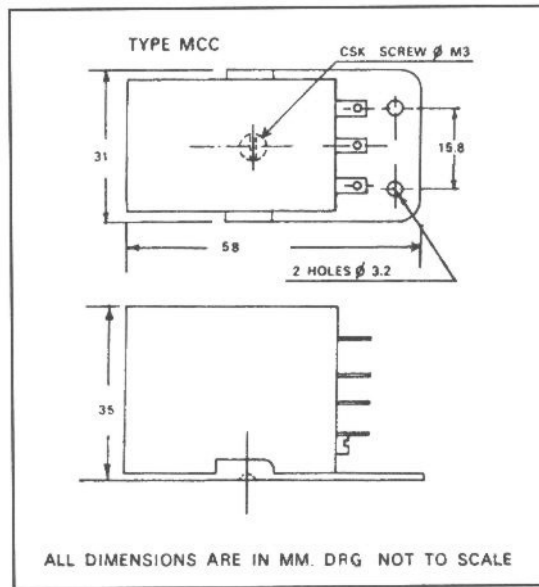
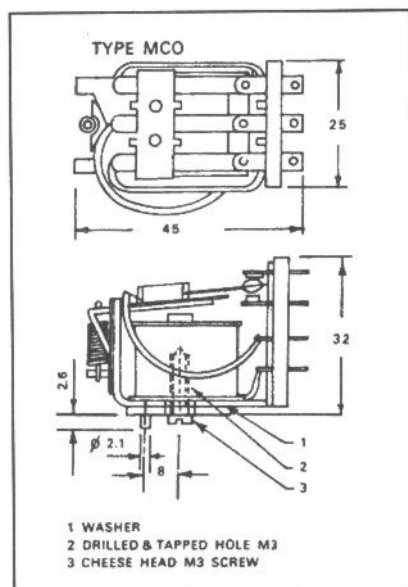
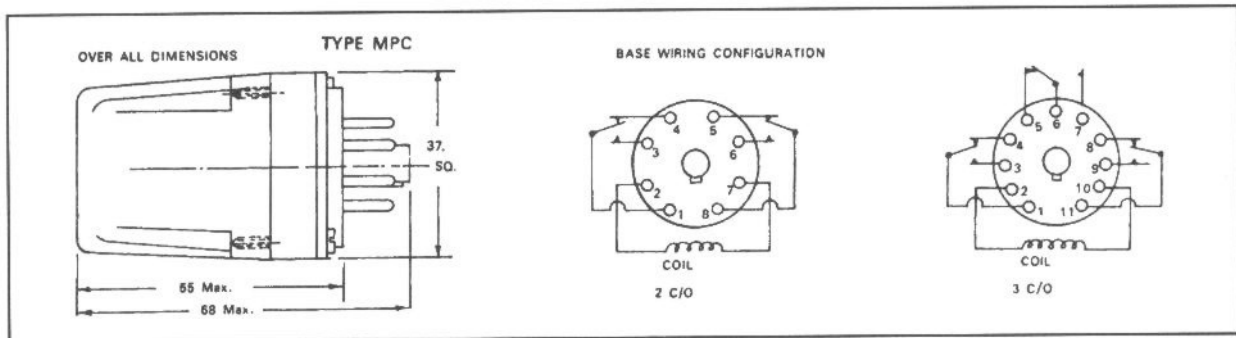
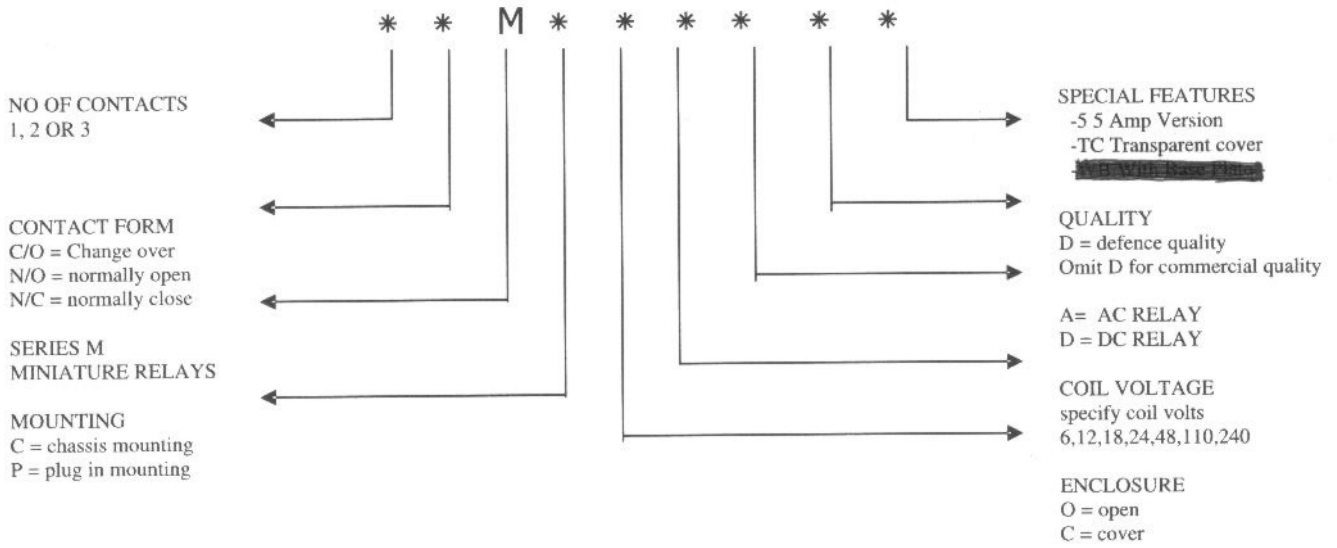
SALIENT FEATURES

- LCSO Approved Version Available
- High Reliability
- Low Cost
- Assured Deliveries

APPLICATIONS:-

- Machine Tools
- Control Panels
- Instrumentation
- Stabilizers
- Textile Machineries
- Industrial & Consumer Electronics
- Electrical Equipments & Appliances
- Automation & Remote Control Systems
- Bio- medical Instruments & Appliances

ORDERING CODE



CAT .NO: MCC/0902

PLA COMPONENTS

Thakor Industrial estate, Kurla-Kirol Road, Vidyvihar (West), Mumbai -400086

Ph : 5106104/05 Fax : 91-22-5168948 Email : pla @ bom3.vsnl.net.in